

KONICA MINOLTA



**Work Power:** bizhub PRO solutions to revolutionize production printing.



COUNT ON KONICA MINOLTA  
bizhub PRO 1200/1200P/1051



## Purpose-built **professionals** in a class all their own.

WITH KONICA MINOLTA, YOU CAN COUNT ON BLAZING SPEED, LONG-RUN RELIABILITY, AND IMAGE QUALITY TO RIVAL OFFSET PRINTING – ALL AT LOWER COST, SETTING A HIGHER STANDARD IN VALUE FOR COMMERCIAL PRINTERS, PRINT-FOR-PAY ENVIRONMENTS AND CORPORATE IN-HOUSE PRINTING FACILITIES. THE BIZHUB PRO 1200, 1200P AND 1051 ARE RAISING THE BAR IN PRODUCTION PRINT – BECAUSE NEEDS ARE CHANGING, EXPECTATIONS ARE RISING, AND BUDGETS ARE FALLING. TO KEEP YOU COMPETITIVE, BIZHUB PRO CAN TAKE YOUR OPERATIONS TO THE NEXT LEVEL. LET'S GET TO WORK.

### **You've got a job to do.**

And you're the experts – because you know what it takes to get the job done right.

Making perfect-bound books and manuals, with trimmed covers. Producing saddle-stitched booklets with inline face trimming. Creating marketing materials, folded any way that suits your application. Printing reports and presentations, with proportional-cut stapling. Turning out training and technical materials, with high-speed punching. And producing professional-looking reports and presentations, adding color covers and inserts.

These are the print production capabilities you told us your business demands – so we built all these functions and options into the bizhub PRO 1200/1200P/1051 system. Plus more – because today's fast-moving production world won't wait for yesterday's print solutions.





bizhub PRO 1051



bizhub PRO 1200



bizhub PRO 1200P



**Superior quality, stamina and speed.**

The bizhub PRO 1200, 1200P and 1051 are purpose-built to give you proven, professional replacements for offset systems in the digital era.

With three models to choose from, you can match output capability to your workflow. The bizhub PRO 1200 gives you print/copy speed of up to 120 pages per minute – 7,200 pages per hour. And it maintains this high-productivity pace through a hard-driving monthly duty cycle of up to 3,000,000 pages.

The bizhub PRO 1200P delivers the same blazing speed and workhorse duty cycle for applications that don't need copy/scan output. And the bizhub PRO 1051 prints up to 105 pages per minute, with copy/scan capabilities – an ideal choice for full-service print centers.

All three models can accommodate up to 14,000 sheets, running longer with less need to reload media. And all deliver truly exceptional image quality, with Konica Minolta's exclusive Simitri® Polymerized toner for high-resolution detail and sharper, more legible text and graphics.

**Compact dimensions, intelligent operation.**

Despite their tremendous speed and output power, these three print professionals have a relatively small footprint – freeing up valuable space on your production floor. Even with multiple paper-handling and rollaway cart options, you'll still save space compared to bulky offset equipment.

And for working professionals, the ultimate sophistication is simplicity: the ability to produce more work with less training.

All three bizhub PRO models make operation easy with sophisticated on-board touch-screens, menus that feel more intuitive, and commands that enable your personnel to produce professional-looking documents with far less training. That can save labor costs – a significant advantage in a tight economy.

Higher throughput, lower cost. Which means extra savings for corporate central reprographic departments and data centers, greater capacity for in-house document printing, and increased profitability for print-for-pay and commercial print production – the bizhub PRO advantage.

**Printing locally – but thinking globally.**

In creating this new generation of print professionals, Konica Minolta has also maintained our long-standing commitment to protect the environment. We cut down on emissions, minimize pollutants and utilize recycled materials wherever possible in our manufacturing operations – aiming for reduced environmental impact throughout the life cycle of each bizhub PRO device.

High-yield toner keeps jobs printing and reduces cost of ownership. Toner bottles are designed for easy recycling. And you can change toner on the fly, with ACT™ (Advanced Continuous Toner) technology that lets you replenish supplies without interrupting production.







## Powerful **technologies** to boost print productivity.

WITH TECHNOLOGY INNOVATIONS THAT TAKE YOU BEYOND THE CAPABILITIES OF STANDARD PRINTERS AND MFPS, THESE PURPOSE-BUILT PROFESSIONALS LEAD THE INDUSTRY. FAIL-SAFE PAPER HANDLING AND PRECISE REGISTRATION ADJUSTMENT MAKE HIGH-QUALITY, LONG-RUN PRINTING MORE RELIABLE – AND MORE PROFITABLE. NEW LED EXPOSURE TECHNOLOGY ACHIEVES GREATER IMAGING PRECISION. AND ENHANCED SCREENING DELIVERS SUPERIOR GRAYSCALE REPRODUCTION, SO PHOTOS AND GRAPHICS LOOK MORE REALISTIC.

### **Image quality that rivals offset printing.**

At Konica Minolta, we work constantly to raise the bar in digital imaging. When you see the bizhub PRO 1200, 1200P and 1051 in action, you'll appreciate the results of our effort.

A new LED Exposure System achieves spectacular 1,200 dpi resolution, so even documents with complex graphics and small typefaces look better than ever. An innovative transfer belt system applies toner to paper with minimum diffusion for sharper, more precise print images.

For more legible text, more natural halftone photos and more detailed graphic diagrams and illustrations, the bizhub PRO 1200 Series uses enhanced screening technologies with full 256-grayscale reproduction.

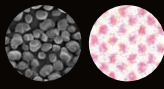
And Konica Minolta's exclusive Simitri Polymerized toner reproduces greater detail – because it employs smaller, more uniform toner particles that adhere more tightly to the paper, rendering fine lines and sharp edges with unsurpassed efficiency.





Exclusive Simitri®  
Polymerized  
toner for high-  
resolution detail  
and superior  
print quality.

Polymerized Toner



### Hands-off reliability, hour after hour.

To keep your bizhub PRO device on the job with maximum uptime, Konica Minolta has incorporated production-grade technology and engineering features – the kind that every pro will appreciate.

The bizhub PRO 1200, 1200P and 1051 all have rugged construction with many metal component parts. Internal heating units condition paper stock to eliminate curling from humidity. Air blowers in paper trays keep even heavy and coated stock moving smoothly. And ultrasonic sensors detect misfeeds to prevent paper jams before they occur.

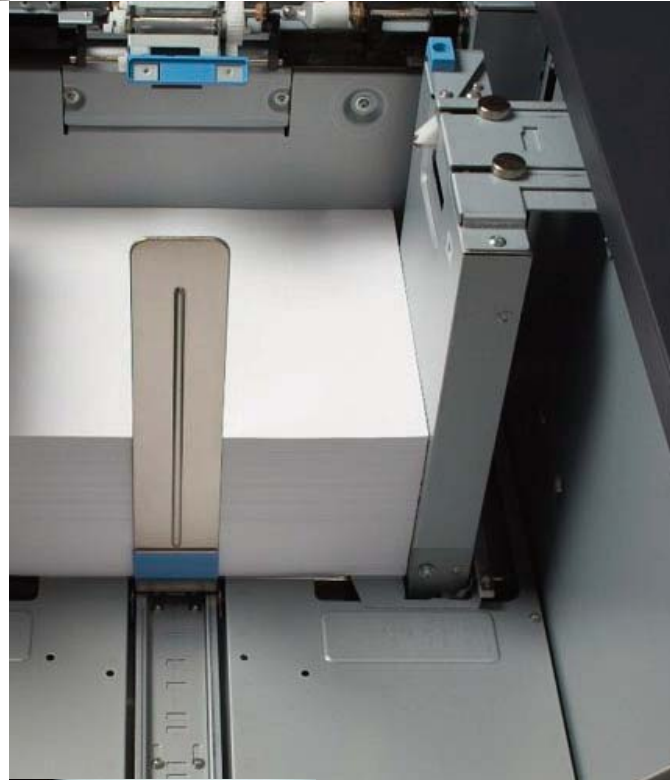
High-capacity optional paper feed units (PF-703) are even equipped with vacuum-feed technology that allows them to handle a wide variety of media with ease – so whatever the print parameters of each job may be, your bizhub PRO will take them in stride.

### Fine-tuned precision over time.

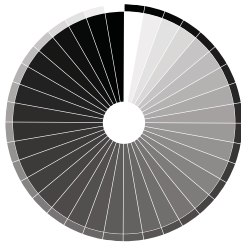
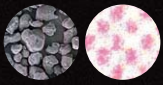
With legacy equipment, precise registration can be challenging to achieve – and to maintain through long print/copy runs.

Konica Minolta technology can provide front-to-back registration accuracy of 0.5mm or less, so your bizhub PRO maintains job integrity from first print to last. Independent adjustments for transversal direction, timing and image shift let you fine-tune your output – and creep adjustment in booklet mode eliminates a common cause of registration errors.

For large print runs on tight production deadlines, these technological advancements can make all the difference – for the quality of your output, the satisfaction of your client, and the competitiveness of your bottom line.



Pulverized Toner



Enhanced  
screening  
technologies  
with full  
256-grayscale  
reproduction.

# In-line finishing options – over 40 right-size configurations.

A RIGHT-SIZE SOLUTION IS THE KEY TO PROFITABLE PRINT PRODUCTION – NO COMPROMISE, NO LIMITATION, NO OVERSTRESSED OR UNDERUTILIZED EQUIPMENT. WHEN YOU GO TO WORK WITH THE BIZHUB PRO 1200, 1200P OR 1051, YOU'LL HAVE EXACTLY THE SPEEDS, FUNCTIONS AND OPTIONS YOUR BUSINESS NEEDS – ALONG WITH BROADER FLEXIBILITY IN MEDIA HANDLING, COMPREHENSIVE FINISHING CAPABILITIES FOR MORE PROFESSIONAL RESULTS, AND OVER 40 SYSTEM CONFIGURATIONS (USING A COMBINATION OF THE COMPONENTS SHOWN BELOW) TO SUIT EVERY PRODUCTION ENVIRONMENT.



## The right media for each job spec.

With bizhub PRO, you'll be able to match the requirements of virtually any job you print.

Two 1,500-sheet paper trays give you 3,000-sheet standard capacity. Your system can be configured with up to 8 paper trays, for a total of 14,000 sheets – outstanding capacity for such a cost-effective system.

Paper trays accept heavyweight media, from 40 all the way up to 350 G/M<sup>2</sup> – which means heavy-stock specs won't require you to turn down special projects. The bizhub PRO 1200 and 1051 also let you copy up to 11" x 17" originals from a standard reversing Auto Document Feeder that loads up to 100 sheets – and all three bizhub PRO models print on paper sizes up to 12" x 18", preserving borders and crop marks.

The vacuum-feed technology of the optional PF-703 Paper Feed Unit keeps media running smoothly. The optional RU-506 Relay Unit provides paper conditioning and de-curling functions to maintain uptime and output even on humid workdays.

And for moving your print output quickly and easily to offline finishing or shipping stations, you can add two optional LS-505 Large-Capacity Stacker units to your system – each with 5,000-sheet capacity and rollaway cart design.

## Print it fast – and finish it right.

With their combination of blazing output speed and powerful auto finishing options, the bizhub PRO 1200, 1200P and 1051 are all designed to help you meet rising production demands.

Option by option, you can build an all-in-one booklet-making, folding and stapling finishing system. The SD-506 Booklet-Maker saddle-stitches and trims booklets up to 200 pages, with large output capacity. The PB-502 and PB-503 Perfect Binding units can automatically create up to 600-page booklets, with hot-glue binding and in-line cover trimming.

To produce documents for offline spiral-bind finishing, the innovative GP-501 GBC Punching Unit supports all common punching schemes. You can easily change die sets to meet different job specs – and multi-hole punching is accomplished at full rated speed, so your output is never compromised.

The FS-521 Staple Finisher gives you multi-position, variable-length stapling of up to 100 sheets. The FD-503 Folding Unit provides 6 types of folding, including gatefold and z-fold – plus hole-punching and post-insertion functions. And the PI-PFU Post Inserter lets you add pages post-process, dressing up your documents with color covers and insert sheets.

With these and other Konica Minolta options, your production print system can be configured over 40 different ways – giving you a right-size bizhub PRO solution that keeps pace with your workload and grows with your business.

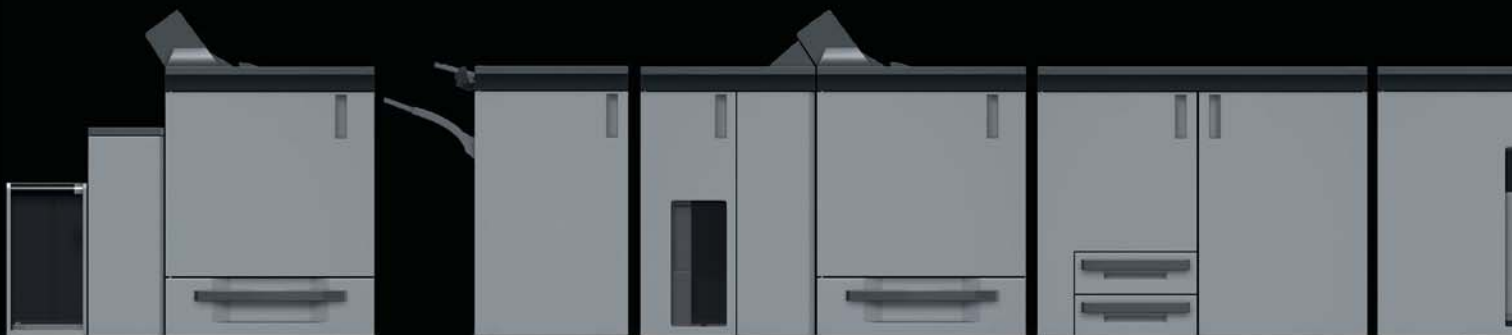
PB-502

FS-521

PB-503

SD-506

LS-505



<b>Main Unit</b>	<b>BIZHUB PRO 1200/1200P:</b> UP TO 120 PPM (8.5" × 11") <b>BIZHUB PRO 1051:</b> UP TO 105 PPM (8.5" × 11") 1200 X 1200 DPI PRINT RESOLUTION <b>EMBEDDED CONTROLLER</b> (PENTIUM M, 2GHZ, 2GB RAM, 160GB) 15" COLOR TOUCH SCREEN USER INTERFACE 100-SHEET DOCUMENT FEEDER (NOT ON 1200P) PRINT/SCAN/COPY (1200P = PRINT ONLY)	
<b>PF-702</b>	<b>PAPER FEED UNIT (FRICTION FEED)</b> UP TO 6000 SHEETS PAPER WEIGHTS: 40 - 350GSM PAPER SIZES: 3.74" X 5.23 - 12.76" X 18.23"	
<b>PF-703 (PI-PFU)</b>	<b>PAPER FEED UNIT (VACUUM FEED)</b> UP TO 5000 SHEETS PAPER WEIGHTS: 40 - 350GSM PAPER SIZES: 3.74" X 5.23 - 12.76" X 18.23" CAN ALSO BE USED AS POST INSERTION - PAPER FEED UNIT (PI-PFU)	
<b>RU-506</b>	<b>RELAY UNIT</b> REQUIRED FOR ALL 1200/1200P CONFIGURATIONS REQUIRED FOR ALL CONFIGURATIONS INCLUDING GP-501 OR PI-PFU	
<b>FD-503</b>	<b>MULTIFOLDING UNIT</b> 6 IN-LINE FOLD PATTERNS: HALF-FOLD, LETTER-FOLD IN, LETTER-FOLD OUT, Z-FOLD, DOUBLE PARALLEL-FOLD, GATE-FOLD SELECTABLE 2- AND 3-HOLE PUNCH POST PROCESS SHEET INSERTION	
<b>GP-501</b>	<b>GBC PUNCHING UNIT</b> SEVEN AVAILABLE PUNCH PATTERNS SIMPLE 'SLIDE-OUT, SLIDE-IN' PUNCH DIE REPLACEMENT	
<b>LS-505</b>	<b>LARGE CAPACITY STACKER</b> SQUARE OR SHIFTED OUTPUT ONTO ROLL-AWAY TROLLEY UP TO 5000 SHEETS PER STACKER UP TO 2 STACKERS CAN BE CONFIGURED TOGETHER (10,000 SHEETS)	
<b>SD-506</b>	<b>SADDLE STITCH FINISHING UNIT</b> PRODUCE SADDLE STITCHED BOOKLETS UP TO 50 SHEETS (200 PAGES) MULTI HALF-FOLD, MULTI LETTER-FOLD (NEST UP TO 5 FOLDED SHEETS) CREEP ADJUSTMENT + FACE TRIMMING	
<b>PB-502</b>	<b>PERFECT BINDER</b> GLUE BIND BOOKS UP TO 30MM (APPROX. 300 SHEETS/600 PAGES) USE PRE-PRINTED COVERS OF PRINT ON COVERS – INCLUDING SPINE	
<b>PB-503</b>	<b>PERFECT BINDER WITH ROLL-AWAY TROLLEY</b> SAME CAPABILITIES AS PB-502 PLUS ADDITIONAL CAPABILITY OF CONNECTING FS-521 STAPLING FINISHER AFTERWARD	
<b>FS-521</b>	<b>STAPLING FINISHER</b> STAPLE UP TO 100 SHEETS, EACH STAPLE CUSTOM CUT FOR SET SIZE STACK UP TO 3000 SHEETS ON ELEVATOR OUTPUT TRAY	

- 1 One-Sided Printing
- 2 Duplex Printing
- 3 Paper/Toner Refill (During Operation)
- 4 Multiplex 1/2 Sided (During Operation)
- 5 Combined Duplex / Mixed Media
- 6 Mixed Media / Color Sheets (From Different Trays)
- 7 Color Sheet Insertion
- 8 Color Cover Insertion
- 9 Relay (Required)
- 10 Letter Fold-In
- 11 Letter Fold-Out
- 12 Gate-Fold
- 13 Double Parallel Fold
- 14 Z-Fold
- 15 2-Hole Punching
- 16 3-Hole Punching
- 17 Half-Fold
- 18 Multi-Hole GBC Punching
- 19 Trolley Stacker
- 20 Shifted Output
- 21 Color Sheet Insertion (Booklet)
- 22 Color Cover Insertion (Booklet)
- 23 Face Trimming
- 24 Multi Letter Fold-In
- 25 Booklet Folding/Saddle Stitching
- 26 Multi Half-Fold
- 27 Perfect Binding
- 28 Perfect Binding/Z-Fold
- 29 Perfect Binding/Color Cover Insertion
- 30 Perfect Binding/Color Cover Sheet Insertion
- 31 Trolley Stacker (Perfect Bound)
- 32 Corner Stapling
- 33 Multi-position Stapling
- 34 Auto-Shift Sorting
- 35 Variable Staple Length





FAST OUTPUT. SUPERIOR QUALITY. POWERFUL OPTIONS. AND LONG-RUNNING RELIABILITY. ALL THESE SET THE BIZHUB PRO 1200 SERIES A SIGNIFICANT STEP AHEAD OF COSTLY OFFSET PRINTING EQUIPMENT. WITH BIZHUB PRO, YOU CAN ALSO TAKE ADVANTAGE OF SPECIAL FEATURES CONVENTIONAL PRODUCTION SYSTEMS CAN'T MATCH – INCLUDING BUILT-IN PRINT CONTROL, DIGITAL PRODUCTIVITY TO REDUCE JOB HANDLING AND QUEUE MANAGEMENT TIME, AND NETWORKING SOFTWARE THAT GIVES YOU TOTAL CONTROL OF YOUR PRODUCTION FLOOR.

**Print control is built-in, not an add-on expense.**

In many print production devices, print controller functionality can be an expensive add-on. With the bizhub PRO 1200 Series, print control is built in – for point-and-click productivity right from the start.

PCL5e/PCL6 and Adobe PostScript 3 interpreters handle the production needs of both Windows and Macintosh documents. The on-screen control interface is so simple, even a novice can print like a pro. And in the bizhub PRO 1200 and 1051, separate command sequences for print, copy and scan functions help to speed workflow and avoid confusion.

The on-board touch-screen control panel allows you to preview documents as thumbnail images before you print, so you can avoid time-wasting reprints if initial print settings don't meet your requirements. Graphic icons highlight paper tray and output tray, for easy setup. And valuable functions like Job Memory (up to 30 jobs), Recall, and Reserve help you manage multiple jobs in queue – to print or reprint quickly and easily.

## Better ways to print, scan, and manage your workflow.





## Fast, flexible scanning – multiple destinations.

The bizhub PRO 1200 and 1051 also enable you to scan documents at up to 105 originals per minute, bringing information into your workflow faster by scanning, saving and sharing – so print files are readily accessible from any networked location on your print floor.

You can Scan-to-SMB, moving documents to secure mailboxes for review, editing and downloading. Scan-to-HDD, storing and reprinting files from built-in high-capacity hard disk drive built into your bizhub PRO. Scan-to-FTP, so any authorized network user can retrieve print documents. And Scan-to-Email, distributing both work files and print files to Email addresses anywhere on the Internet. You can also perform TWAIN scanning to save and retrieve images to/from your hard drive.

All this scanning power may seem unnecessary to traditional production print applications – and for environments that don't require scanning, the bizhub PRO 1200P provides economical, high-speed print-only performance with all other Konica Minolta advantages.

But in today's networked world, fast and flexible scanning can save steps and speed the production process. So digital scanning is a real plus.



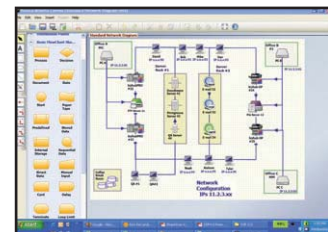
## PageScope® and Printgroove®: superior production tools.

To help you manage your system, the bizhub PRO 1200 Series incorporates Konica Minolta's PageScope® software suite. Including PageScope Web connection, allowing you to check device status via your standard web browser. And PageScope Direct Print, to let you send PDF or TIFF files to your bizhub PRO device in just a few simple commands, without using print drivers.

For managing your entire production floor, Konica Minolta offers another ingenious software solution: Printgroove. It's the industry's most comprehensive, cost-effective and easy-to-use production workflow system.

This award-winning production suite lets you input jobs 24/7 via the Internet, handle files in any format, create and update job tickets, select printers, track jobs and manage account information automatically.

Printgroove modules can do it all: last-minute job ticket editing, device priority setting, CSV data import/export, powerful make-ready functions, workflow visualization with drag-and-drop icons (Konica Minolta® Canvas), even digital "white board" job tracking with real-time status display (Reflection for Printgroove®) – to maximize the power of your bizhub PRO production system.



# The power of quality, reliability and modularity.

BOOKLET MAKING UNIT FOR BROCHURES UP TO 50 SHEETS OR 200 PAGES

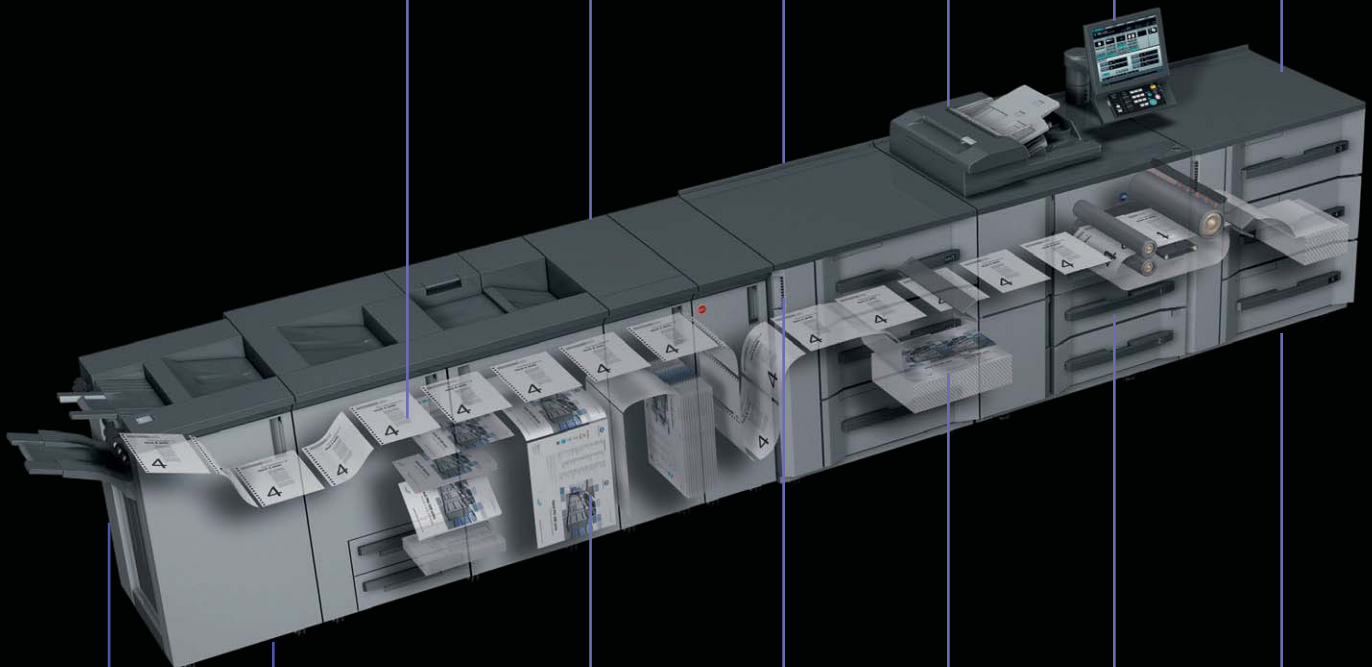
OPTIONAL PUNCHING AND FOLDING UNIT/ 6 DIFFERENT FOLDING MODES

BLACK AND WHITE ENGINE 1,200 X 1,200 DPI PRINT RESOLUTION

HIGH PERFORMING LINUX BASED PRINT CONTROLLER WITH ENHANCED SCREENING TECHNOLOGY

LARGE TOUCH SCREEN MONITOR WITH NEWLY DESIGNED GUI

UP TO 8 PAPER TRAYS FOR UP TO 14,000 SHEETS/OPTIONAL PAPER FEED HEATING UNIT TO SUPPORT THE USAGE OF OFFSET AND COATED PAPER



OPTIONAL PERFECT BINDING UNITS FOR BOOKS FROM 10 TO 300 SHEETS

STAPLING UNIT FOR DOCUMENTS OF UP TO 100 SHEETS WITH VARIABLE STAPLE LENGTH AND LARGE CAPACITY OUTPUT TRAY

OPTIONAL LARGE CAPACITY STACKER FOR OUTPUT OF UP TO 5,000 SHEETS; CAN BE INSTALLED AS A TANDEM FOR UP TO 10,000 SHEETS OUTPUT CAPACITY

POST INSERTION UNITS FOR UP TO 6,000 SHEETS FROM UP TO 5 TRAYS

DECURLING UNIT FOR ABSOLUTELY FLAT OUTPUT OF ANY PAPER TYPE

LED PRINTER HEAD WITH SIMITRI® TONER AND VACUUM PAPER FEED

PAPER FEED UNITS FOR PAPER WEIGHTS BETWEEN 40 AND 350 GSM AND SIZES UP TO 12.76 X 18.23 IN.

### Printer Specifications bizhub PRO 1200/1200P

#### PRINT SPEED LETTER:

UP TO 120 PPM  
UP TO 7,200 PPH

#### PRINT SPEED 11" X 17":

UP TO 70 PPM  
UP TO 4,200 PPH

### Printer Specifications bizhub PRO 1051

#### PRINT SPEED LETTER:

UP TO 105 PPM  
UP TO 6,300 PPH

#### PRINT SPEED 11" X 17":

UP TO 60 PPM  
UP TO 3,600 PPH

**PRINT RESOLUTION:** 1,200 X 1,200 DPI

**GRADATIONS:** UP TO 256 LEVELS

### System Specifications

**PAPER WEIGHT:** 40 – 350 GSM

**DUPLEX UNIT:** NON-STACKING TYPE

#### PAPER SIZE:

MIN. 182 X 139 MM  
MAX. 324 X 463 MM

**MAXIMUM IMAGE AREA:** 314 X 460 MM

#### PAPER INPUT CAPACITIES:

MAXIMUM: 14,000 SHEETS  
MAIN UNIT: UP TO 3,000 SHEETS  
PF-702: UP TO 6,000 SHEETS  
PF-703: IP TO 5,000 SHEETS

#### MAXIMUM PAPER OUTPUT CAPACITY:

2 LARGE STACKERS: 10,000 SHEETS  
LARGE CAPACITY TRAY OF FS-521: 3,000  
PER SUBTRAY: 200 SHEETS

**WARM-UP TIME:** LESS THAN 480 SEC.

#### MAIN UNIT DIMENSIONS (W X D X H):

39.0" X 30.7" X 48.5"

**MAIN UNIT WEIGHT:** APPROX. 827 LBS.

### Controller Specifications

**TYPE:** EMBEDDED CONTROLLER

**CPU:** PENTIUM M 2.0 GHZ

**RAM:** 2 GB

**HDD:** 160 GB OR ABOVE

#### INTERFACE:

ETHERNET (10/100/1,000-BASE-T)  
IPv6

#### PAGE DESCRIPTION LANGUAGES:

PCL 5E/XL (PCL 6), ADOBE PS 3, TIFF, PDF

#### PRINTER DRIVERS:

WINDOWS VISTA (32/64), 2000/XP/SERVER 2003  
MAC OS X 10.2, 10.4, 10.5

### Scanner Specifications (not for bizhub PRO 1200P)

#### SCAN SPEED LETTER:

UP TO 105 OPM  
UP TO 6,300 OPH

#### SCAN SPEED 11" X 17":

UP TO 60 OPM  
UP TO 3,600 OPH

#### SCAN RESOLUTION:

1200 DPI/600 DPI/400 DPI/300 DPI/200 DPI

#### SCAN MODES:

TWAIN SCAN  
SCAN-TO-HDD  
SCAN-TO-FTP  
SCAN-TO-SMB  
SCAN-TO-E-MAIL  
SCAN FORMATS  
PDF, TIFF, SECURED PDF, XPS

### Copier Specifications (not for bizhub PRO 1200P)

#### bizhub PRO 1200

#### COPY SPEED LETTER

UP TO 120 CPM  
UP TO 7,200 CPH

#### COPY SPEED 11" X 17"

UP TO 70 CPM  
UP TO 4,200 CPH

#### COPY RESOLUTION

MAX.: 600 X 600 DPI  
GRADATIONS  
256 GRADATIONS

#### bizhub PRO 1051

#### COPY SPEED LETTER

UP TO 105 CPM  
UP TO 6,300 CPH

#### COPY SPEED 11" X 17"

UP TO 60 CPM  
UP TO 3,600 CPH  
BIZHUB PRO 1200

**FIRST COPY:** LESS THAN 2.8 SEC.

**MAGNIFICATION:** 25 – 400 % IN 0.1 % STEPS

**MULTIPLE COPIES:** 1 – 9,999

### Accessories

#### AUTOMATIC DOCUMENT FEEDER (NOT AVAILABLE ON BIZHUB PRO 1200P):

MAX.: 100 SHEETS

### Paper Feed Units

#### PF-702:

3 DRAWERS  
PAPER CAPACITY: UP TO 6,000 SHEETS  
PAPER WEIGHT: 40 – 350 GSM  
MIN. PAPER SIZE: 95 X 139 MM  
MAX. PAPER SIZE: 324 X 463 MM

#### PF-703 (CAN ALSO BE ATTACHED

#### AS POST INSERTION UNIT):

3 DRAWERS WITH AIR-SUCTION TECHNOLOGY  
PAPER CAPACITY: UP TO 5,000 SHEETS  
PAPER WEIGHT: 40 – 350 GSM  
MIN. PAPER SIZE: 95 X 139 MM  
MAX. PAPER SIZE: 324 X 463 MM

### Relay Unit

#### RU-506:

SHEET REVERSE  
ADAPTS PROCESSING SPEED TO 120 PPM  
(REQUIRED ON BIZHUB PRO 1051 FOR  
ATTACHEMENT OF GP-501)

### Folding and Punching Unit

#### FD-503:

PRE-PRINTED SHEET INSERTION (PI):  
2 PI TRAYS FOR 500 SHEETS EACH  
PUNCHING (2 AND 3 HOLE)  
FOLDING (HALF-FOLD, Z-FOLD, GATE-FOLD,  
LETTER FOLD IN, LETTER FOLD OUT,  
DOUBLE-PARALLEL-FOLD)  
SUBTRAY FOR UP TO 200 SHEETS

### GBC Punching Unit

#### GP-501:

PUNCHING OF LETTER SIZED SHEETS  
USER REPLACEABLE DIE SETS FOR: VELO BIND,  
PLASTIC COMB, WIRE BIND, COLOR COIL, 3-HOLE  
PAPER WEIGHT: 75 – 216 GSM

### Saddle-stitching Unit

#### SD-506:

BOOKLET MAKING OF UP TO 50 SHEETS (200 IMAGES)  
SADDLE STITCHING, TRIMMING  
OUTPUT TRAY FOR UP TO 50 BOOKLETS  
SUBTRAY FOR UP TO 200 SHEETS  
MULTI LETTER FOLD IN (UP TO 5 SHEETS)  
MULTI HALF FOLD (UP TO 5 SHEETS)

### Stacking Unit

#### LS-505:

UP TO 5,000 SHEETS STACKING CAPACITY  
TWO UNITS CAN BE INSTALLED IN TANDEM  
UP TO 10,000 SHEETS STACKING CAPACITY  
TROLLEY MOUNTED STACKER  
AUTO-SHIFT STACKING  
SUBTRAY FOR UP TO 200 SHEETS  
PAPER CLAMP MECHANISM

### Perfect Binding Units

#### PB-502:

HOT MELT GLUE BINDING SYSTEM  
INTEGRATED 1-SIDE TRIMMING OF  
COVER SHEETS  
BOOKS FROM 307 X 221 MM  
BOOKS FROM 10 SHEETS UP TO 30 MM SPINE WIDTH  
COVER PAPER TRAY FOR UP TO 1,000 SHEETS  
SUBTRAY FOR UP TO 200 SHEETS  
BOOK STACKING CAPACITY OF UP TO 3,300 SHEETS  
2 STACKS

#### PB-503:

SAME AS PB-502, EXCEPT:  
TROLLEY BASED OUTPUT OF PERFECT BOUND BOOKS  
BOOK STACKING CAPACITY  
OUTPUT TRAY: 3,300 SHEETS  
TROLLEY: 3,300 SHEETS  
CAN BE COMBINED WITH STAPLING UNIT FS-521

### Stapling Unit:

#### FS-521:

STAPLING OF UP TO 100 SHEETS  
2-POINT AND CORNER STAPLING  
VARIABLE STAPLE LENGTH (CUTTING MECHANISM)  
OUTPUT FOR UP TO 3,000 SHEETS  
SUBTRAY FOR UP TO 200 SHEETS  
AUTO-SHIFT SORTING AND GROUPING

• All specifications relating to paper capacity refer to letter size paper of 80 gsm quality.

• All specifications relating to scanning, copying or printing speeds refer to letter size paper that is scanned, copied or printed in portrait orientation in multi-page, simplex mode.

• The support and availability of the listed specifications and functionalities varies depending on operating systems, applications, network protocols, as well as network and system configurations.

• Some of the product illustrations contain optional accessories.

• Not all options available at the time of launch.

## COUNT ON KONICA MINOLTA

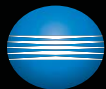
Konica Minolta Business Solutions U.S.A., Inc., is a fast-growing leader in advanced digital imaging systems. Print professionals count on Konica Minolta for bizhub PRO equipment that fulfills increasing demands for high-speed, low-cost color and B&W production. Konica Minolta also provides leadership technology in workflow management, print floor automation, advanced security and flexible networking to support a broad range of applications in corporate central reprographics, data centers, commercial and government printing and print-for-pay services.

With over 37,000 worldwide employees, cutting-edge research programs in optical and digital technology, a deep commitment to environmental protection, and the industry's most complete line of document imaging equipment from desktop to print shop, Konica Minolta was recognized by Brand Keys for the second consecutive year as the #1 Brand for Customer Loyalty in the MPF Office Copier Market. As long as you count on Konica Minolta, you've made the right decision.

For more information, please visit: [www.CountOnKonicaMinolta.com](http://www.CountOnKonicaMinolta.com)

© 2009 KONICA MINOLTA BUSINESS SOLUTIONS U.S.A., INC.

All rights reserved. Reproduction in whole or in part without written permission is prohibited. Konica Minolta and Count on Konica Minolta are trademarks of KONICA MINOLTA HOLDINGS, INC. ACT, bizhub, PageScope, and Printgroove are trademarks of KONICA MINOLTA BUSINESS TECHNOLOGIES, INC. Simitri is a registered trademark of KONICA MINOLTA BUSINESS SOLUTIONS. All other brands and product names are registered trademarks or trademarks of their respective owners. Design and specifications are subject to change without notice. Some functions may require options, which may or may not be available at time of launch.



**KONICA MINOLTA**

KONICA MINOLTA  
BUSINESS SOLUTIONS U.S.A., INC.

100 Williams Drive  
Ramsey, NJ 07446

[www.CountOnKonicaMinolta.com](http://www.CountOnKonicaMinolta.com)  
[www.kmbs.konicaminolta.us](http://www.kmbs.konicaminolta.us)