



KONICA MINOLTA

bizhub PRO
1050

High-volume workflow, print-shop performance.

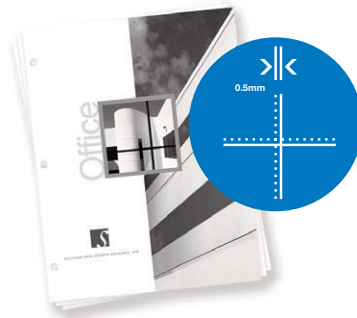


Digital Production Printing System. The power to print, and keep on printing. 105 pages per minute. 1,500,000 impressions per month. Scanning. Finishing. Precision paper handling and registration. Powerful PageScope Software. With superior image quality and hands-off reliability.



The essentials of imaging

Registration accuracy of 0.5 mm or less maintains razor-sharp print definition – and you'll have independent adjustments for transversal direction, timing and image shift, plus low temperature fixing and improved sensing precision.



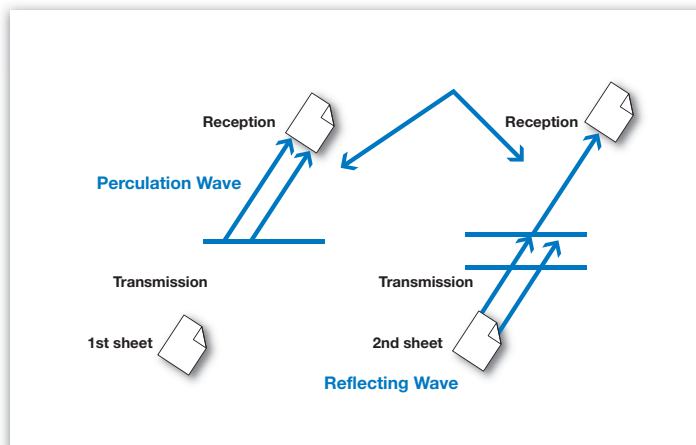
A true production professional.

Purpose built. From the drawing board to the production floor, for the rigors of the production environment. That's the bizhub PRO 1050. A professional production system, from Konica Minolta. Designed through a process of technological innovation resulting in numerous pending patents – in make-ready, imaging, and finishing. A superior replacement for offset systems in the digital era. And the bizhub PRO 1050 delivers exactly what you need: the durability and productivity of legacy "big iron" equipment, at a lower cost – and with a smaller footprint too!

Do it all – and do it like a PRO.

That's why you need bizhub PRO 1050. To speed your output. Manage your input. Maintain control, from scanning to finished documents. To quicken your workflow, serve your clients, cut your costs – and improve the quality of all your printed, finished documents.

Balance of Perculation Volume

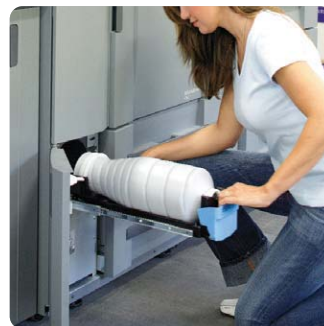


Multi-feed detection sensor

uses ultrasound to detect misfeeds, prevent paper jams and maximize production efficiency for long unattended print runs.

Faster, stronger, smarter, tougher.

Blazing speed – 105 ppm print/copy output, 103 ppm scanning. Powerhouse performance, achieved through a monthly duty cycle of 1,500,000 impressions. Hands-off reliability, with air-assist paper feed that uses air blowers in paper trays to separate sheets and keep even coated paper stock moving smoothly – and a multi-feed detection sensor to prevent jams before they occur. The bizhub PRO 1050 is built to withstand the highest-volume document traffic in the toughest print-shop environments. With the bizhub PRO 1050 on your production team, you'll have the competitive edge – and the power to grow your business.

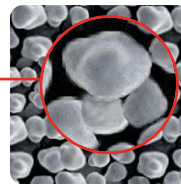


Change toner on the fly

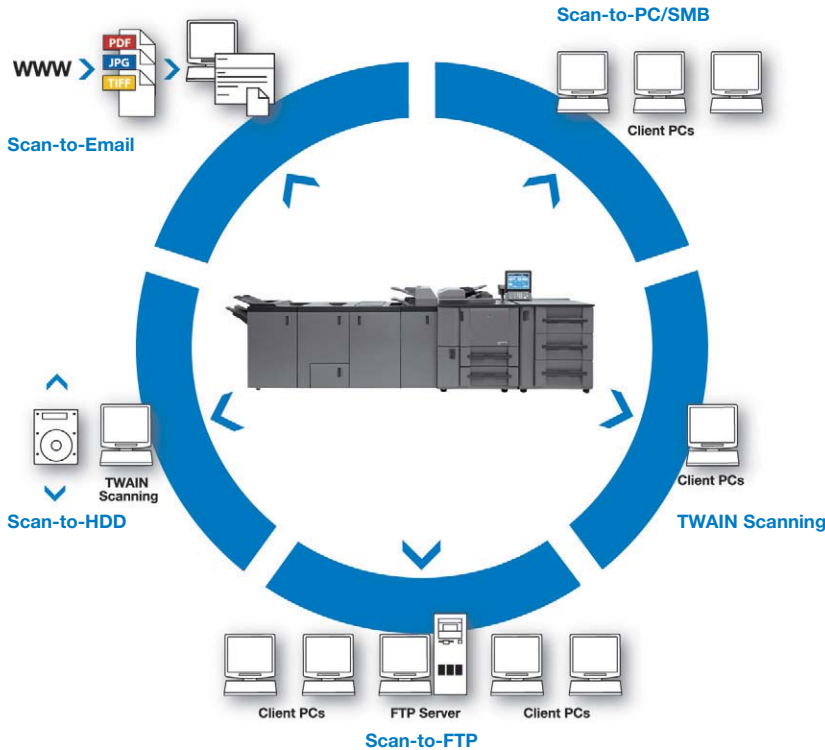
with ACT™ (Advanced Continuous Toner™) replacement system – so you won't need to interrupt long print/copy runs.

Next-generation Simitri® Polymerized Toner with ultra-fine particles of smaller size and more consistent shape that improve detail and definition — giving your prints and copies sharper text, crisper images, improved halftones.

Simitri®



Pulverized



Scan and distribute in a single step with total flexibility and document security, sending electronic files across the aisle or around the world.

Precision imaging and registration.

Professional print production is all about results – and with the bizhub PRO 1050, your results will be visibly superior. Konica Minolta's exclusive next-generation Simitri® Polymerized Toner sharpens text, refines detail and gives every halftone image smoother gradations and higher definition. You'll also have registration accuracy to within 0.5 mm, with independent adjustments to help you fine-tune production output – plus low temperature fixing and improved sensing accuracy to maintain accuracy over long print runs.

A central document resource.

Not only does the bizhub PRO 1050 power up your print production – it also gives you fast, flexible scanning and distribution. So hard-copy documents enter your workflow faster. And you can move information to any destination, for sharing, storing, accessing and archiving. Scan-to-Email. Scan-to-SMB, distributing documents to user's desktops for immediate access. Scan-to-HDD, for storage in secure mailboxes on your built-in, high-capacity disk drive. Scan-to-FTP, for retrieval by any network user. And TWAIN scan for retrieval of images scanned into your hard drive.



Power to meet any production demand.

Including industry-leading 200-page saddle-stitched booklets, brochures, training manuals, human resources packages, direct-mail flyers, reports, presentations, spreadsheets, photos, graphics and more.



Whatever it takes to get the job done.

The bizhub PRO 1050 gives you all the power, all the paper, all the print and finish capabilities you need. A multi-position staple/stacker lets you output 100-page reports, with built-in staple-cutting function. A post-engine inserter lets you add pre-printed covers and insert sheets to documents. Speaking of heavy stock, you'll be able to handle paper weights from 16 lb. bond to 170 lb. index – and sizes up to 12" x 18", in universal paper trays. Maximum paper capacity of 9,000 sheets keeps production rolling while you concurrently pre-program future jobs. And two optional stackers, each with 5,000-sheet capacity, let you move print output for offline finishing or shipping with rollaway ease. Why all this extra capacity? Because a true production professional can handle anything the job demands.

Professional production, start to finish.

You need it? You've got it. 9,000-sheet input. Stapling, hole-punching, cover insertion. 6 folding options. Saddle-stitch booklet-making. 10,000-sheet output. And stacker units that roll out to make handling your print production run more efficient.



6 Folding Options:

half-fold booklet-making, gatefold, letter fold-in, letter fold-out, double parallel fold, and z-fold.



① **DF-603 Reversing Auto Document Feeder:**

100-sheet capacity, handles up to 11" x 17" originals.

② **Large LCD Screen:**

simple commands and intuitive menus make operation easy for any user.

③ **FS-503 Stapler/Stacker Unit:**

provides multi-position stapling, 100-sheet staple capacity, staple cutting function, and a total capacity of 3,000 sheets

④ **SD-501 Saddle-Stitch Unit:**

center-staples up to 50 sheets for 200-page booklet-making.

⑤ **Toner Compartment:**

for clean, fast toner replacement on the fly.

⑥ **Standard Paper Trays:**

two universal trays, each holding up to 1,500 sheets.

⑦ **PF-701 Universal Paper Tray Unit:**

3 optional trays, handling up to 12" x 18" paper and 2,000 sheets each.

⑧ **FD-501 Multi-Folding Unit:**

6 folding types, plus cover insertion and hole-punch capability.

○ **LS-501, LS-502 Large Capacity Stackers:**

each with 5,000-sheet capacity and roll-out design.

○ = Not shown



Anyone can print like a PRO.

With the bizhub PRO 1050, you'll have all the power to meet your production demands – but you won't need a full-time professional operator. The print controller is built-in – and operated by a large LCD screen with a simple, intuitive interface that's easy to understand. You'll have a powerful, 20 GB hard disk drive, genuine Adobe PS3 and PCL5e/XL (PCL6) interpreters and versatile, easy to use print drivers. You'll also have on-board control of a wide range of print production and finishing functions – including Job Memory (up to 30 jobs), Recall and Reserve (up to 500 jobs) for quick printing and reprinting.

Every step of the way, you're in control.

Larger, brighter touch-screen. LCD display featuring print preview thumbnails. Print drivers with full production features, including input/output selection and finishing options. All this, plus the power of PageScope – a full suite of management tools to speed your workflow and increase your productivity.

Simple, intuitive command menus.

Simple, intuitive command menus. Controls are at your fingertips. Commands are logical. Menus are intuitive – and organized by function, with separate sequences for scanning, copying and printing. Without leaving your bizhub PRO 1050, you can preview an on-screen thumbnail of the document you're about to print – allowing you to check page layout, margins and overall appearance, cutting the need for wasteful re-runs. And comprehensive setup and input/output settings are made even easier by a graphic icon that highlights input paper tray and output tray location.

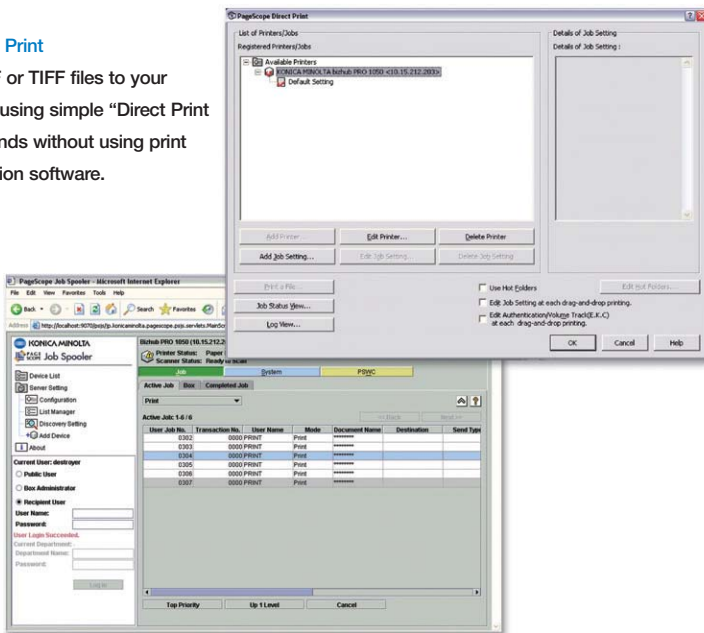


Easy walk-up print production with simple controls and a large LCD screen mounted on a convenient swivel arm.



PageScope Direct Print

lets you send PDF or TIFF files to your bizhub PRO 1050 using simple "Direct Print Function" commands without using print drivers or application software.



PageScope Job Spooler

allows you to view and manage your bizhub PRO 1050 print queue from any network-connected PC.

The power of PageScope.

It's the industry's most comprehensive suite of software – all working seamlessly together to help you speed print production and manage documents and devices. PageScope Direct Print and PageScope Job Spooler streamline your production output. PageScope Web Connection lets you check device status via your standard web browser. PageScope Net Care helps IT administrators manage all MIB-compliant output devices from a single point – even non-Konica Minolta models.



**PAGESCOPE
SOFTWARE**



bizhub PRO 1050



General Specifications

TYPE:
Console Digital
Printer/Copier/Scanner

IMAGING SYSTEM:
Laser Electrostatic

DEVELOPMENT SYSTEM:
Next-Generation Simitri®
Polymerized Toner

MONTHLY DUTY CYCLE:
1,500,000 pages

PRINT/COPY SPEED:
105 ppm

PRINT RESOLUTION:
1200 x 600 dpi

REGISTRATION ACCURACY:
0.5mm or less

SCANNING SPEED:
103 ppm

SCAN RESOLUTION:
200, 300, 400, 600 dpi

HALFTONE REPRODUCTION:
256 gradations

MEMORY:
512 MB (standard)
40 GB (HDD)

WARM-UP TIME:
Less than 6 minutes

FIRST COPY:
Less than 3 seconds

COPY QUANTITY:
1 - 9,999 copies (countdown,
interrupt capability)

MAGNIFICATION:
Zoom range: 25 - 400%,
0.1% increments
Preset reduction: 93%, 77%,
65%, 50%
Preset enlargement: 121%,
129%, 155%, 200%

EXPOSURE MODES:
Auto
Text
Photo
Text/Photo
Manual

ORIGINAL SIZE:
To 11" x 17" maximum

PAPER SIZE:
4" x 6" to 12" x 18"*

PAPER WEIGHT:
16 lb. bond to 140 lb. index
Up to 170 lb. index / 300 gsm
(from Tray 4)
OHP transparencies, tab pages,
coated stock

PAPER SUPPLY:
Tray 1: 1,500-sheet universal
paper tray
Tray 2: 1,500-sheet universal
paper tray

OPTIONAL PAPER SUPPLY:
Three-tray universal paper feed
unit, including:
Tray 3: 2,000-sheet capacity
Tray 4: 2,000-sheet capacity
Tray 5: 2,000-sheet capacity

MAXIMUM PAPER CAPACITY:
Input: 9,000 sheets (total, with
optional paper feed unit)
Output: 10,000 sheets (total, with
2 optional stacker units)

DOCUMENT FEEDER:
DF-603 Reversing Auto
Document Feeder (standard)
Speed: 103 opm
Paper Capacity: up to 100 sheets
Paper Size:
5-1/2" x 8-1/2" to 11" x 17"
Paper Weight:
up to 110 lb. index, 200 gsm

POWER REQUIREMENTS:
208 - 240 V, 17.6 A, 60 Hz

POWER CONSUMPTION:
3.66 kW (max. with full options)

**MAIN BODY DIMENSIONS
(W x D x H):**
35-1/4" x 30-1/2" x 46-7/8"
(895 x 775 x 1190 mm)

WEIGHT:
683 lbs. (310 kg) (with ADF)

OPTIONS:
FS-503 Stapler/Stacker Unit
(100-sheet capacity, staple
cutting function)
FD-501 Multi-Folding Unit
(6 folding types, cover inserter,
hole-punch)
SD-501 Saddle-Stitch Unit
(50 sheets, 200-page
booklet-making)
LS-501 Large Capacity Stacker
(5,000-sheet capacity)
LS-502 Large Capacity Stacker
(5,000-sheet capacity)
PF-701 Paper Feed Unit
(three universal trays, each
2,000-sheet capacity)
Removable HDD Kit

PAGESCOPE APPLICATIONS:
Production Printing:
PageScope DirectPrint
PageScope Job Spooler
Network & Device Management:
PageScope EMS Plug-Ins
PageScope NDPS Gateway
PageScope Net Care
PageScope Network Setup
PageScope Web Connection

Available Functions*

Annotation (Bates Stamp)
APS/AMS
Auto Document Feeding
Auto Duplex, Stackless
Auto Layout (centering)
Auto Low Power, Reset, Shutoff
Auto/Text/Photo/Increase
Contrast Exposure Modes
Auto Tray Switching
Book Copy
Booklet Making
Border Erase
(frame, fold, frame & fold)
Cover Insertion
Electronic Copy Monitor
(1,000 accounts)
Energy Save Mode
Erase (frame, fold, non-image area)
Face-Up or Face-Down Output
Folding (booklet, gatefold, letter
fold-in, letter fold-out, double
parallel, z-fold)
Grouping
Hole-Punching (2-hole, 3-hole)
Image Insert
Image Overlay (scanned image
onto copied image)
Image Repeat
Image Rotation
Image Shift
Intelligent Job Building
Interrupt (pause)
Job Memory (30 jobs), Recall,
Reserve (100 jobs)
Job Status
Mixed Original Detection
Negative Image Capability
OHP Interleave
(blank or copied sheets)
Print Spooling
Proof Copy
Rotation Exit (horizontal/vertical)
Saddle-Stitching (center-stapling
up to 50 sheets for 200-page
booklets)
Scanning: Email, FTP, PC, HDD,
TWAIN scan (HDD data
can be retrieved through the
TWAIN Driver)
Secure Print
Separate Scanning (Job Building)
Sorting
Stamping
Stapling
Storyboarding (2-in-1, 4-in-1,
8-in-1, even 16-in-1 from
print driver)
Tabs (from tabbed originals to
tabbed sheets with tab
ejection feature)
Tandem Copy/Print Capability
Weekly Timer
Zoom

Print Controller Specifications

TYPE:
Internal Print Controller

CENTRAL PROCESSING UNIT:
Intel® Pentium® III @ 933MHz

MEMORY:
512 MB

HARD DISK DRIVE:
20 GB

PRINT DRIVERS:
Windows, 98, ME, NT4.0, 2000,
XP, 2003
Mac OS 8.0 or later
Mac OS 10.2/10.3

PAGE DESCRIPTION LANGUAGE:
PCL5e/XL (PCL6)
Adobe PostScript 3

FONTS:
PCL Fonts: 88
PostScript Fonts: 136

INTERFACE:
Ethernet 10/100 Base T
Parallel IEEE 1284

SECURITY:
ISO-15408 Compliant

NETWORK SCANNING:
Email, FTP, PC, HDD, TWAIN scan
(HDD data can be retrieved
through the TWAIN Driver)



© 2006 KONICA MINOLTA BUSINESS SOLUTIONS U.S.A., INC. All rights reserved. Reproduction in whole or in part without written permission is prohibited. Konica Minolta and The essentials of imaging are trademarks of KONICA MINOLTA HOLDINGS, INC. bizhub, bizhub PRO and PageScope are trademarks of KONICA MINOLTA BUSINESS TECHNOLOGIES, INC. Simitri is a registered trademark of KONICA MINOLTA BUSINESS SOLUTIONS. All other brands and product names are registered trademarks or trademarks of their respective owners.

Design & specifications are subject to change without notice.

*Some functions may require options.

bizhub PRO 1050



KONICA MINOLTA

KONICA MINOLTA
BUSINESS SOLUTIONS U.S.A., INC.

100 Williams Drive
Ramsey, NJ 07446

www.kmbs.konicaminolta.us
www.kmbs.konicaminolta.us/solutions

Item #: 1050BRO
09/06